

IBECS[®] BY MD&A

The Integrated Solution to Power Plant Control and Monitoring

Native Language Device Drivers

Talks to your control systems without the lag created by third party communication protocols.

GE[®] Mark V Stagelink Over ARCNET

GE[®] Mark VI UDH Ethernet

Allen-Bradley[®] DF1 DH+ Ethernet/IP

Many more device drivers available upon request

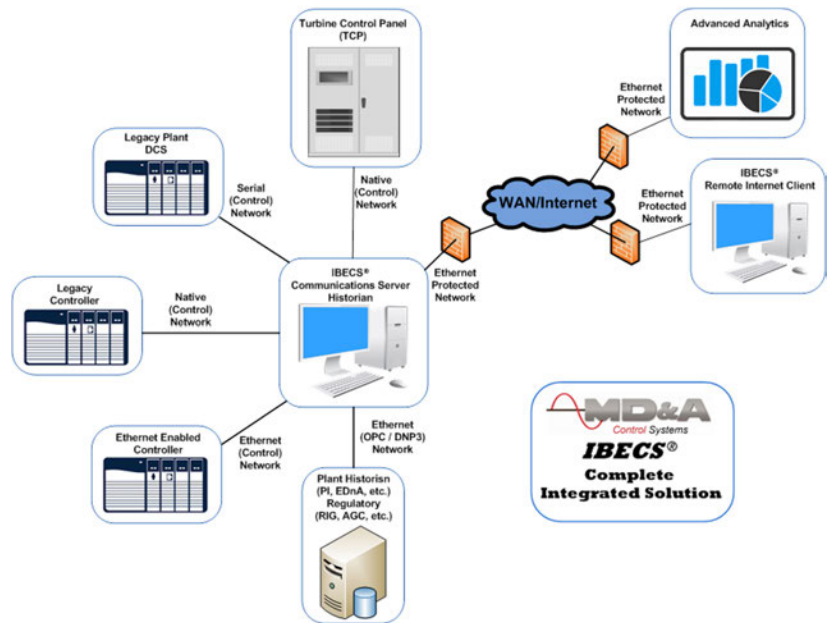
Open Source Device Drivers

Server / Client communication protocols

OPC (Open Platform Communications) formerly OLE for Process Control

MODBUS TCP/IP UDP/IP Serial RTU/A SCII MB+

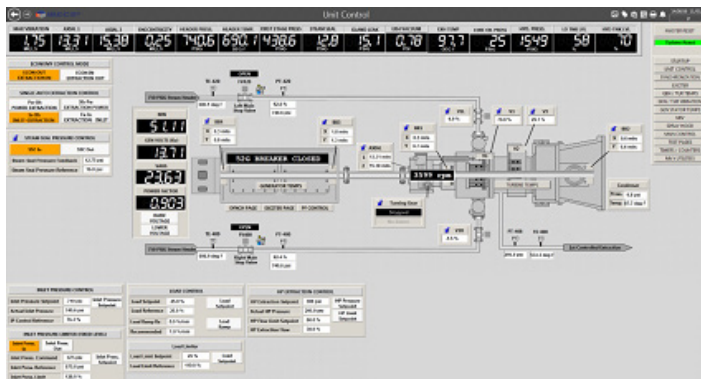
DNP 3.0 Serial, Ethernet



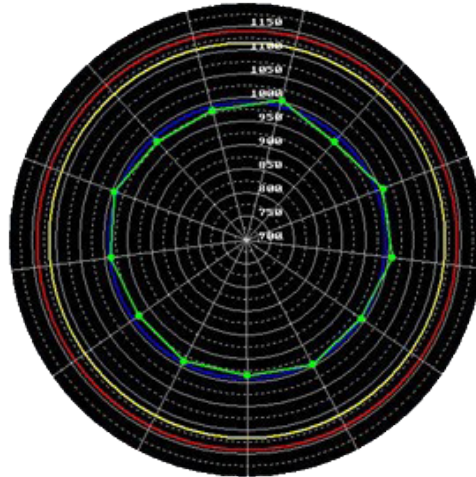
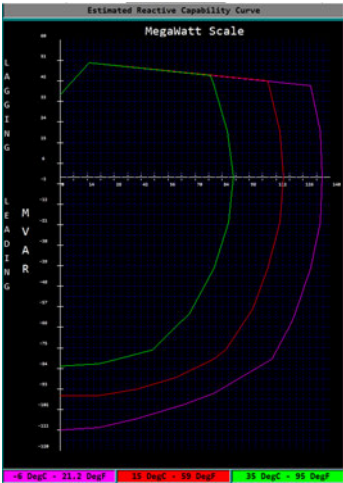
Networked Deployment

- Multiple data servers across several workstations share data
- Provides option for data server redundancy
- Allows HMI Updates to be made from any configuration station

Easy to configure HMI can be modified while online.



Special Power Plant Specific Tools



Full Data Server Capability

- Internet Server Capability, Monitor your process wherever you may be.
- Serve Process Data on MODBUS or OPC to Third Party Devices

Historical Logging and Trending

- Multiple pens available per trend for viewing complex events. Your most useful trend groups can be saved for routine use; Can be used to review historical data or view live trends.
- Use historical data to compose reports using MS Excel® format templates or ASCII, CSV, or MS Access® or output directly to the Screen, Printer, or ODBC data source

Advanced Users Can Use VTS Language to Add Custom Elements

- Custom Tags, Scripting, and Screen Elements can be programmed into a project at the source code level. A language reference is included in online help.

