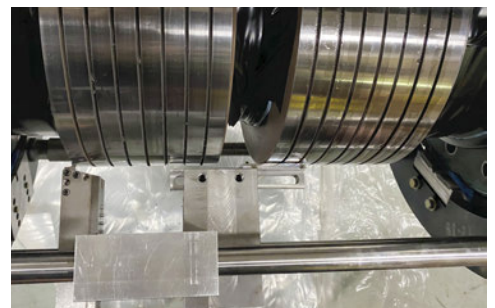
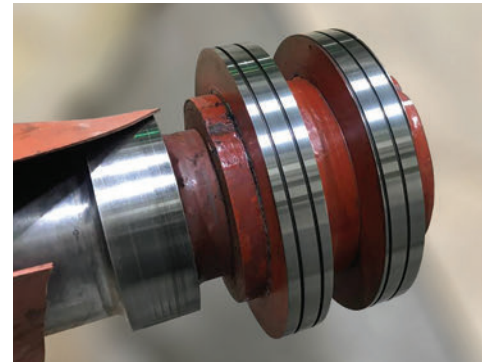


COLLECTOR RING MACHINING

On-Site In-Place Stationary Shaft Machining Expertise



Mechanical Dynamics & Analysis now performs in-place stationary shaft machining, which allows our customers to repair damaged journals, collector rings, and seal areas without removing turbine and generator rotors from the unit. We support collector ring axial widths down to 1.5" with our single stone process for final honing and polishing.

Reconditioning Solutions:

- Uneven rings can be ground to the same diameter and made concentric with the rotor shaft
- Worn dust grooves may be able to be restored to their original condition by regrooving the rings
- Repairs are completed while stationary or in turning gear
- Rings can be removed and reinsulated if the insulation is grounded
- If excessive wear makes regrooving or remachining impossible new rings can be installed with new insulation
- New collector rings are installed on-site and in-situ